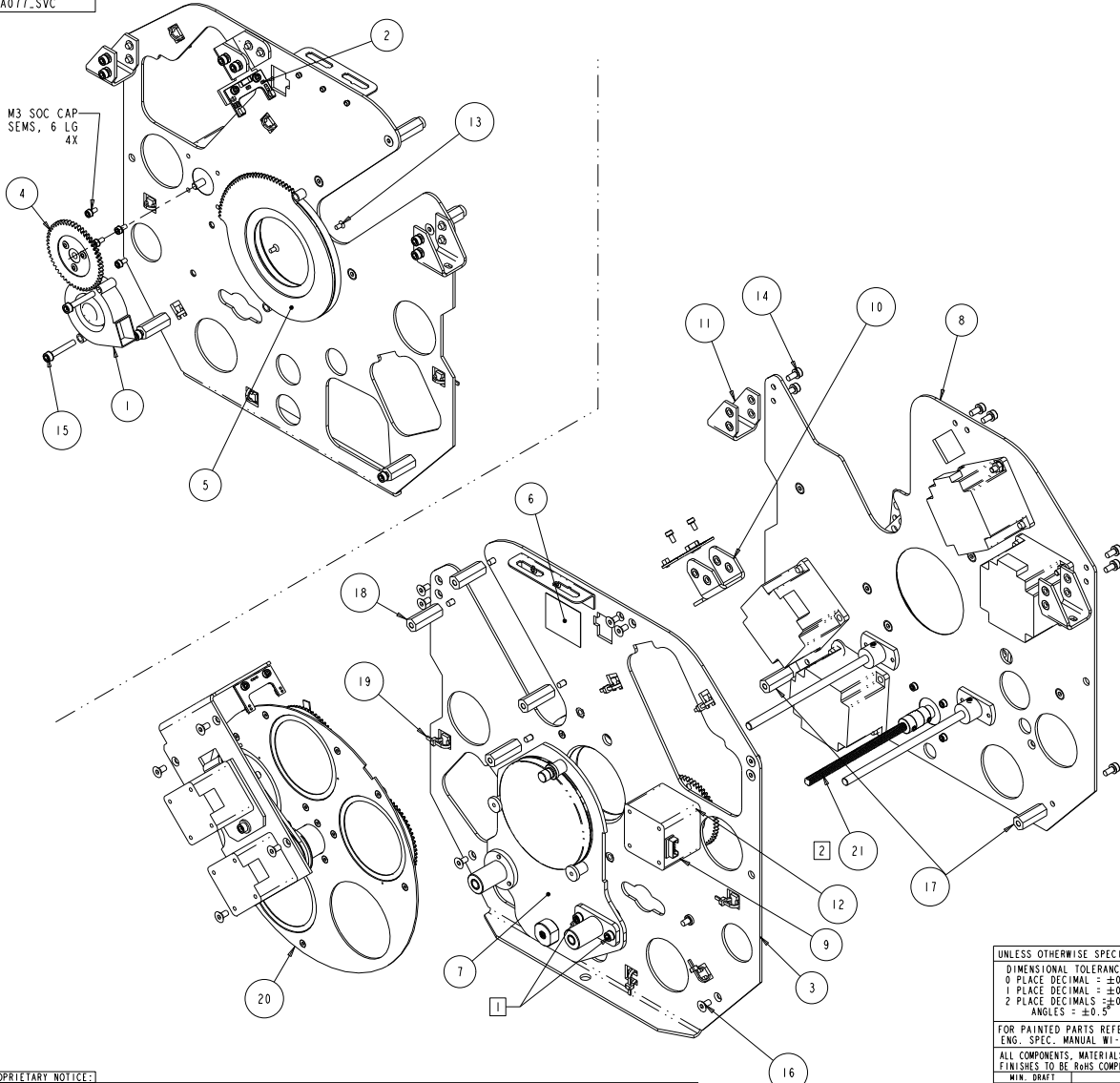


FOR SERVICE REFERENCE ONLY



- NOTES: APPLICABLE TO VIEWS ON THIS SHEET ONLY
- 1. TIGHTEN SCREWS AFTER ACHROMAT LENS ASSEMBLY IS INSTALLED ONTO SHAFTS AND DRIVE NUT IS ENGAGED FULL TRAVEL AGAINST HOMING STOP.
 - 2. APPLY KRYTOX LUBRICANT TO DRIVE SCREW.

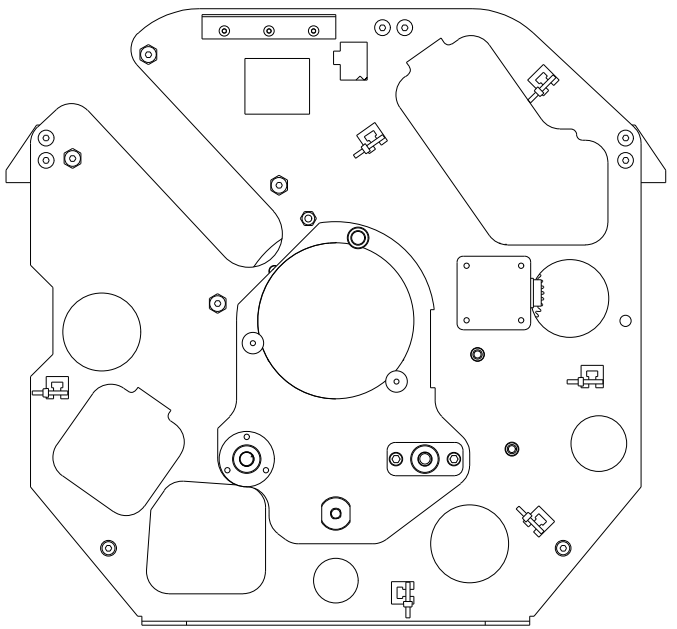
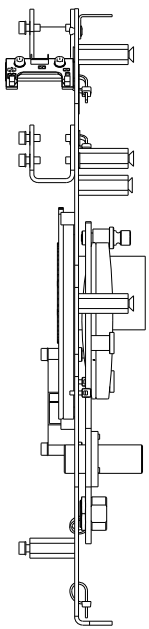
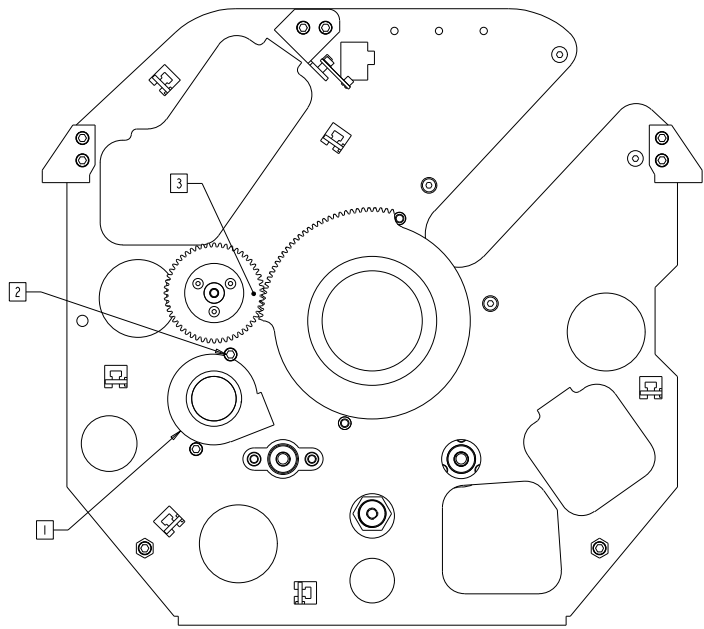
ITEM NO.	QTY.	FILENAME	PART NO.	DESCRIPTION
22	AR	NA	99250004	GREASE,KRYTOX FLOURINATED (8 OZ) GPL-225
20	1	TTA092	80560049	WHEEL,ASM,W/LITHO & MOTORS SG 2.5 SVC
19	6	TIE_WRAP3-4	99330007	TIE WRAP 3in, 4in, 10SC BLK
18	4	TW368	90702370	STANDOFF, M4, F/F, L=1.115
17	2	TW369	80070478	STANDOFF, M4, F/F, L=1.000
16	16	SCREWM4AF08BZ	91040408	SCREW,M4 SOCKET CSNK FLAT 08 BZ W/PATCH
15	2	SCREWM4AC25W-BZ	91000425	SCREW,M4 SOCKET CAP 25 BZ SEMS
14	8	SCREWM4AC08BZ	91000408	SCREW,M4 SOCKET CAP 08 BZ SEMS
13	2	SCREWM3AF06BZP	91040306	SCREW,M3 SOCKET CSNK FLAT 06 BZ W/PATCH
12	6	SCREWM3AC06W-BZ	91000306	SCREW,M3 SOCKET CAP 06 BZ SEMS
11	2	TT103	99263128	MOUNT,SUPPORT, IRIS BULKHEAD SG 2.5
10	1	TT104	99263129	MOUNT,SENSOR PCB,ROT GOBO SG 2.5
9	1	MR108_01	99270075	MOTOR,STEP 2PH MET S17 11.5mm ALNICO NMB
8	1	TTA076	NA	MODULE,ASSY,COLOR, YELLOW/CYAN,SG SVC
7	1	TWA079	80160065	LENS,ASSY,ACHROMAT SG SVC
6	1	99310452	99310452	LABEL,GOBO MOTOR COVER SG
5	1	TW501	99290033	IRIS,HIGH TEMP,75MM ID,18 LEAF,GEARDR A1
4	1	FSA058	99430067	GEAR, ASSY DRIVE 52 TOOTH OVERMOLD
3	1	TW659	80070471	BULKHEAD,IRIS
2	1	TT425	80040045EF	BOARD,SENSOR 1" X .45" FRONT CONN ASSY
1	1	TW720	80270041EF	BLOWER,ASSY,24V,51MM,GOBO

BILL OF MATERIALS

UNLESS OTHERWISE SPECIFIED	RELEASE DATE:	CE:	2105 GRACY FARMS LANE AUSTIN, TEXAS 78758 (512) 836-2242 FAX (512) 832-4128 ***** http://www.highend.com	LIGHTWAVE RESEARCH
DIMENSIONAL TOLERANCES:	ENG:	OA:		
0 PLACE DECIMAL = ±0.38	ME:	DRW:		
1 PLACE DECIMAL = ±0.25	MEG:			
2 PLACE DECIMALS = ±0.13	DESCRIPTION:	BULKHEAD,ASM,IRIS SG 2.5 SVC		
ANGLES = ±0.5°	MATERIAL:	FINISH:		
FOR PAINTED PARTS REFER TO ENG. SPEC. MANUAL WI-0592	CHARTED	N/A		
ALL COMPONENTS, MATERIALS AND FINISHES TO BE R&HS COMPLIANT	INTERPRET DIMENSIONS PER ASME Y14.5M-1994	PART NO.	DRAWING NO.	
MIN. DRAFT	THIRD ANGLE PROJECTION	80430116	TTA077_SVC	
MIN. RADIUS	SI METRIC A1	REV.		
FLATNESS	DIMENSIONS ARE IN MILLIMETERS	NA		
THICKNESS	DO NOT SCALE	SCALE: 0.600	SHEET: 1 OF 2	
VOLUME				

PROPRIETARY NOTICE:
 THIS DOCUMENT CONTAINS CONFIDENTIAL AND PROPRIETARY INFORMATION OF HIGH END SYSTEMS INC., (ALSO DBA LIGHTWAVE RESEARCH) AND IS GIVEN TO THE RECEIVER IN CONFIDENCE. THE RECEIVER ACCEPTS AND AGREES THAT, EXCEPT AS AUTHORIZED BY HIGH END SYSTEMS, THE RECEIVER WILL NOT PERMIT THE USE OF THE DOCUMENT OR ANY COPY THEREOF OR THE INFORMATION THEREIN, WILL NOT COPY OR PERMIT COPYING THE DOCUMENT OR THE INFORMATION THEREIN, AND WILL UPON COMPLETION OF THE NEED TO RETAIN THE DOCUMENT, OR UPON DEMAND, RETURN THE DOCUMENT WITHOUT RETAINING ANY OF THE INFORMATION CONTAINED THEREIN IN ANY FORM WHATSOEVER.

**FOR SERVICE
REFERENCE ONLY**



- NOTES: APPLICABLE TO VIEWS ON THIS SHEET ONLY
- 1. VERIFY WIRING ON BLOWER MOUNT FACE IS ENGAGED UNDER WIRE RETENTION TAB.
 - 2. MAX TORQUE ON MOUNT SCREWS 6 IN POUNDS.
 - 3. SET TOP FACE OF OVERMOLDED GEAR ASSEMBLY FLUSH WITH TOP FACE OF IRIS GEAR.

VARIOUS COMPONENTS REMOVED FOR CLARITY

PROPRIETARY NOTICE:
THIS DOCUMENT CONTAINS CONFIDENTIAL AND PROPRIETARY INFORMATION OF HIGH END SYSTEMS INC., (ALSO DBA LIGHTWAVE RESEARCH) AND IS GIVEN TO THE RECEIVER IN CONFIDENCE. THE RECEIVER ACCEPTS AND AGREES THAT, EXCEPT AS AUTHORIZED BY HIGH END SYSTEMS, THE RECEIVER WILL NOT PERMIT THE USE OF THE DOCUMENT OR ANY COPY THEREOF OR THE INFORMATION THEREIN, WILL NOT COPY OR PERMIT COPYING THE DOCUMENT WILL NOT DISCLOSE TO OTHERS EITHER THE DOCUMENT OR THE INFORMATION THEREIN, AND WILL UPON COMPLETION OF THE NEED TO RETAIN THE DOCUMENT, OR UPON DEMAND, RETURN THE DOCUMENT WITHOUT RETAINING ANY OF THE INFORMATION CONTAINED THEREIN IN ANY FORM WHATSOEVER.

UNLESS OTHERWISE SPECIFIED DIMENSIONAL TOLERANCES: 0 PLACE DECIMAL : ±0.38 1 PLACE DECIMAL : ±0.25 2 PLACE DECIMALS ±0.13 ANGLES : ±0.5°	RELEASE DATE: ENG: ME: MFG:	CE: QA: DRW:	High End 2105 GRACY FARMS LANE AUSTIN, TEXAS 78758 (512) 836-2242 FAX (512) 832-4128 http://www.highend.com	Lightwave RESEARCH
FOR PAINTED PARTS REFER TO ENG. SPEC. MANUAL WI-0582 ALL COMPONENTS, MATERIALS AND FINISHES TO BE RSHS COMPLIANT	MATERIAL: CHARTED	FINISH: N/A	DESCRIPTION: BULKHEAD, ASM, IRIS SG 2.5 SVC	
MIN. DRIFT MIN. RADI FLATNESS THICKNESS VOLUME	INTERPRET DIMENSIONS PER ASME Y14.5M-1994 THIRD ANGLE PROJECTION DIMENSIONS ARE IN MILLIMETERS	SI METRIC A1	PART NO. 80430116	DRAWING NO. TTA077_SVC
DO NOT SCALE		SCALE: 0.333	SHEET: 2 OF 2	